

# INOVSAFECARE

Educating students for innovative infection prevention  
and control practices in healthcare settings

## InovSafeCare Model



# InovSafeCare



WELCOME!

## IPSantarém - Escola Superior de Saúde de Santarém team



**Maria do Rosário  
Pinto**



**Cassilda Sarroeira**



**Alcinda Reis**



**Joaquim Simões**



**Helena Caseiro**



**Fátima Cunha**



**InovSafeCare**

# **INOVSAFECARE MODEL**

**Contextualization...**

**within the Project,**

**along with its development**

# InovSafeCare Model

## Contextualization within the Project

- **The InovSafeCare Model is a model for facilitating nursing students to learn good practices in the field of HCAs prevention and control, raising awareness and encouraging them to critically reflect on current maladaptive practices in the clinical settings and develop innovative solutions for their resolution.**
- **In order to promote its use in a perspective of international cooperation for innovation, the InovSafeCare Model was developed as a generic model, which will be independent of local teaching or working culture in nursing.**
- **However, practical recommendations will be provided on how to implement this model in nursing curricula, taking into account specifics of different European teaching and learning systems, reason why it will be developed in collaboration with all partners (to get experiences in the functionality and in the adaptability of the model into the curriculum in different working and teaching cultures).**

# Empirical basis of InovSafeCare Model



What do you think?

What do you suggest?

➤ **Qualitative data** (nurses & teachers perspectives on **HOW** the process should be done) - **Categories**

➤ **Quantitative data** (students perspectives about the **curricula** and **personal dimensions**)




# InovSafeCare Model

## Contextualization within the Project

**Globally, the InovSafeCare Model contains:**

- **Concrete learning goals** for HCAIs prevention and control;
- **A theoretical pathway** that encourages the student to **critically analyze the clinical settings** where his/her training takes place, reinforcing the need to **develop** (singularly or in collaboration) **innovative solutions** that reinforce the basic assumptions of HCAIs prevention and control; ▶
- **Innovative pedagogical methods** and learning paths for the acquisition of specific HCAIs prevention and control skills and knowledge; ▶
- **Certification criteria** of the acquisition of competences within HCAIs prevention and control.

# Designing the InovSafeCare Model

- **InovSafeCare** intends to be an **operative Model** centered on **learning/teaching process** in HCAI prevention and control area
- **Main goal is to emphasize the area** and the **objectives of the ISC Model** are
  - **To provide a student-centred learning environment** that capacitates to intervene in HCAIs control and prevention process 
  - **To enhance learners' awareness and involvement** in the process of HCAIs prevention and control
  - **To develop creative and critical thinking in clinical decision making**, evidence-based supported, to prevent and control HCAIs 
  - **To encourage learners' entrepreneurship towards innovative approach** perspectives in HCAIs prevention and control 

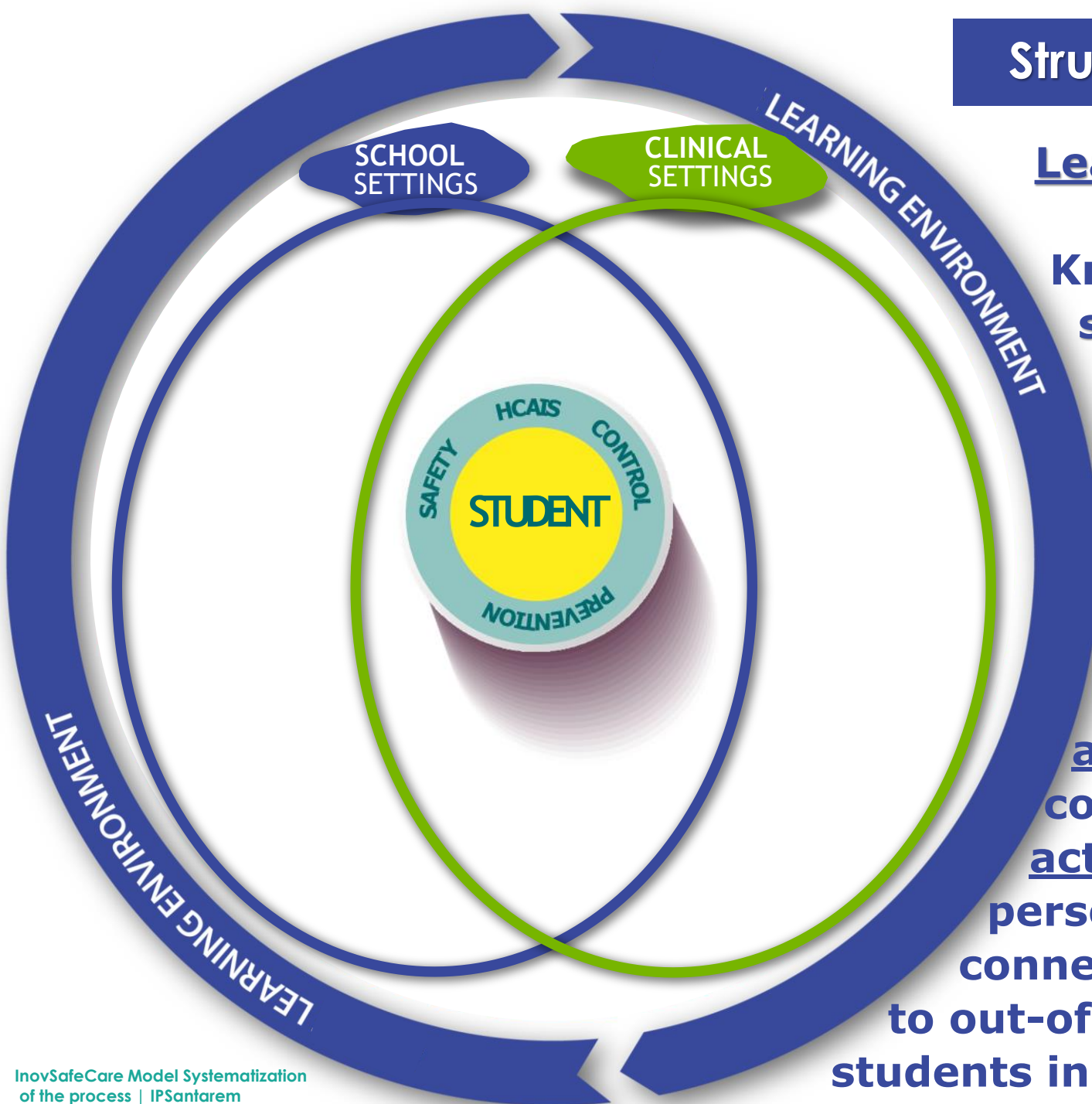
# Structure of the InovSafeCare Model

## Learning Environment

Known important variable that affects students' learning process in general, understood as the diverse physical locations, contexts and cultures in which students learn.

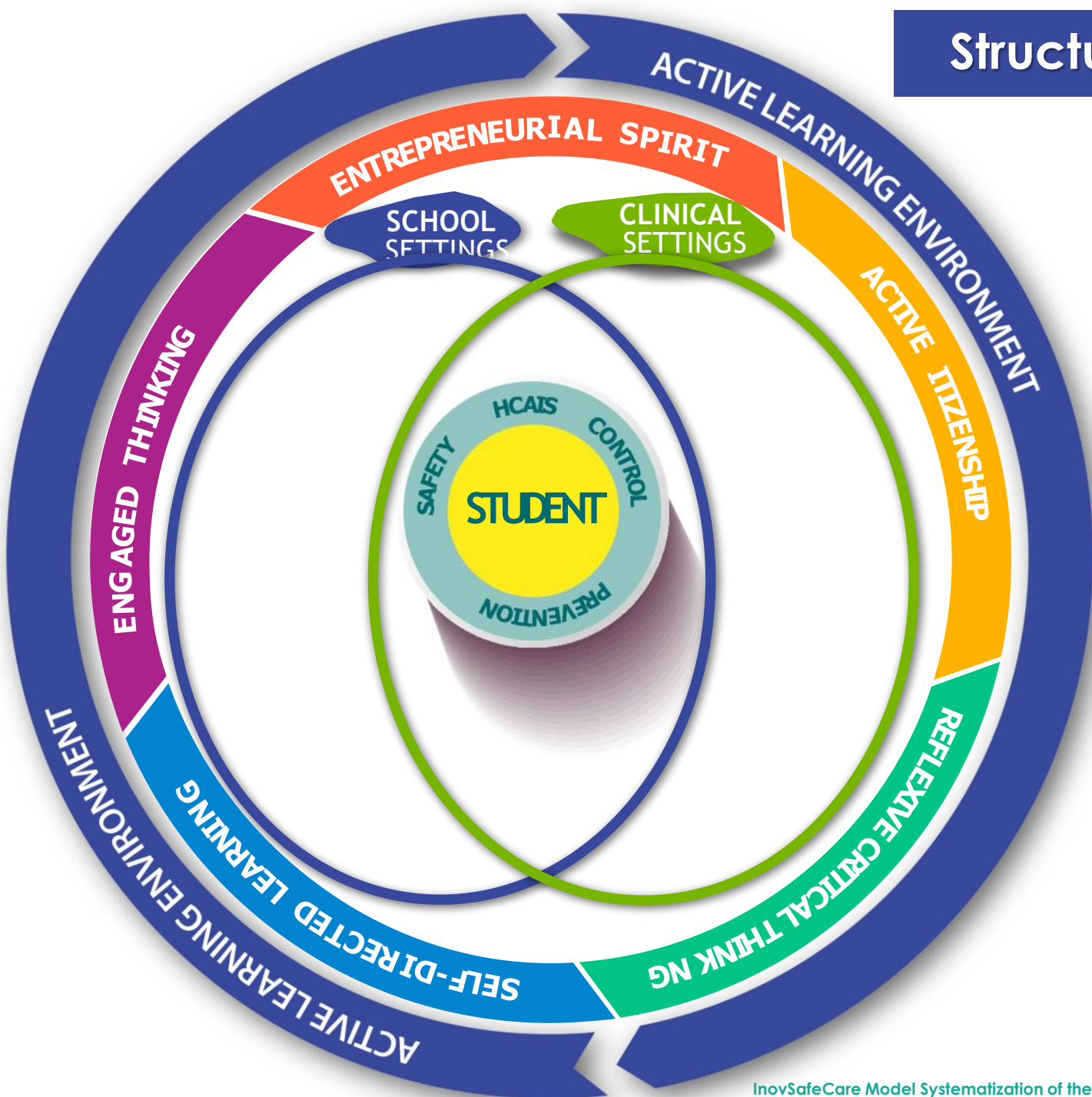
## Active learning

Includes any activity encouraging students to participate in learning approaches which involve them with cooperative activities that promote active engagement by making learning personally relevant for the learner, connecting teaching activities within school to out-of-school experiences, engaging students in authentic tasks.





# Structure of the InovSafeCare Model



This **active learning environment** can arouse and encourage **engaged**, **reflexive and critical thinking**, enhance **creativity** and support **self-directed learning**, in order to help students handle present and future challenges increasing **citizenship** and **entrepreneurial spirit**.

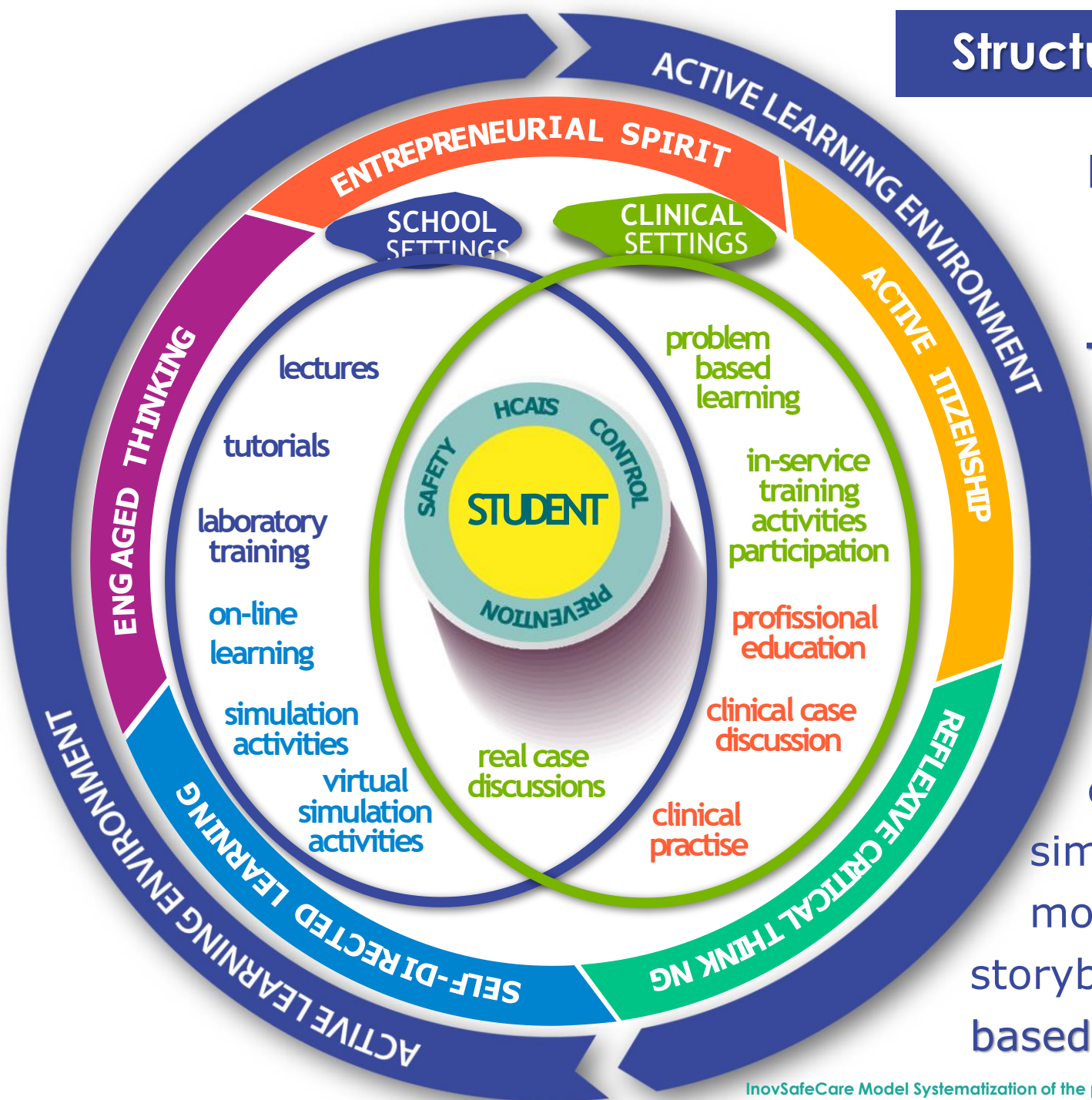


# Structure of the InovSafeCare Model

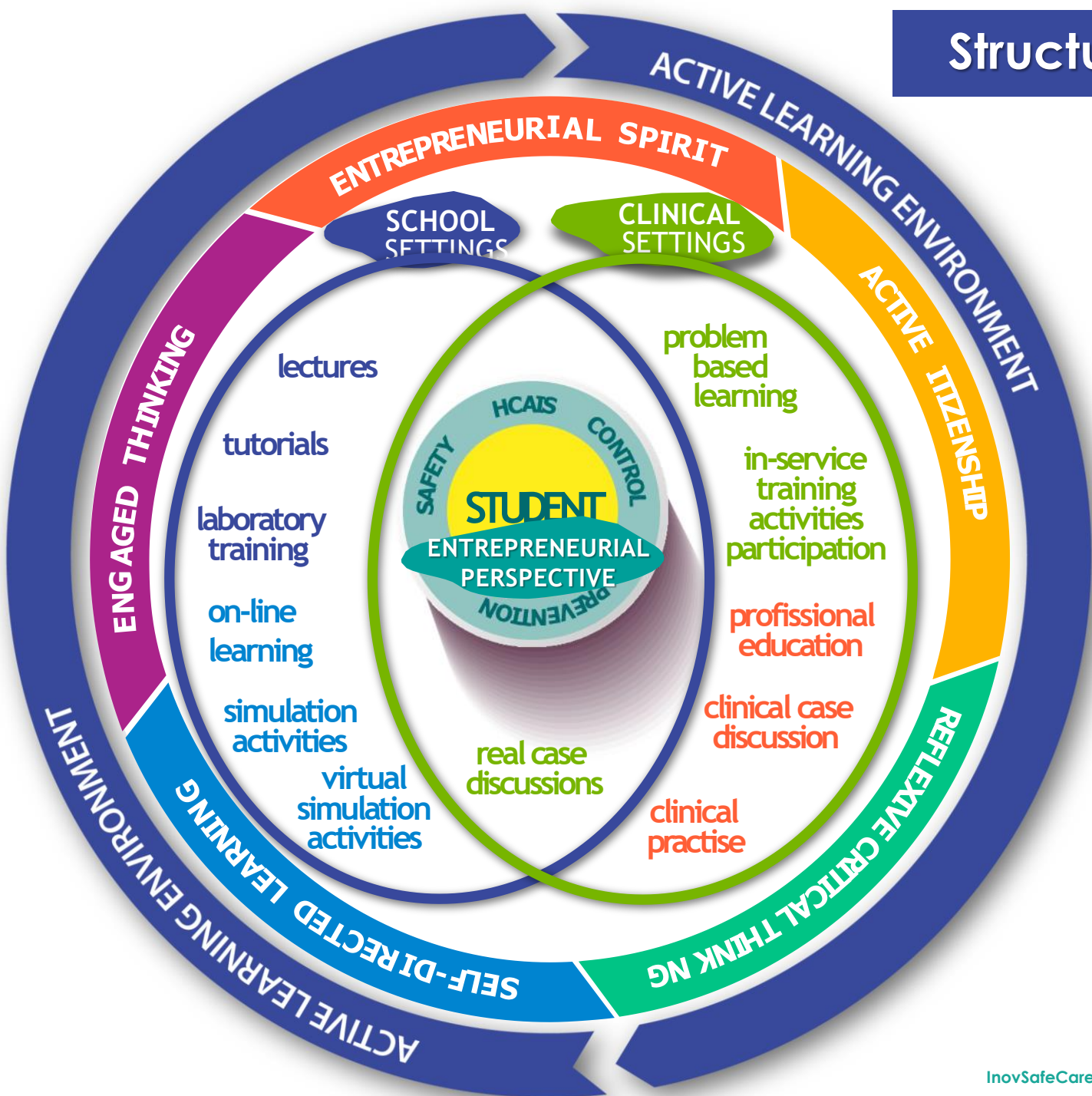
## Nursing Education Innovative Strategies

**Technological:** simulation, digital teaching aids, online teaching and assessment, e-learning, virtual learning environments, social media and mobile technologies

**Non technological:** utilization of concept mapping, use of high-fidelity simulation in teaching and assessing mobilization of reflexion processes, use of storyboard technique, utilization of problem-based learning or peer learning

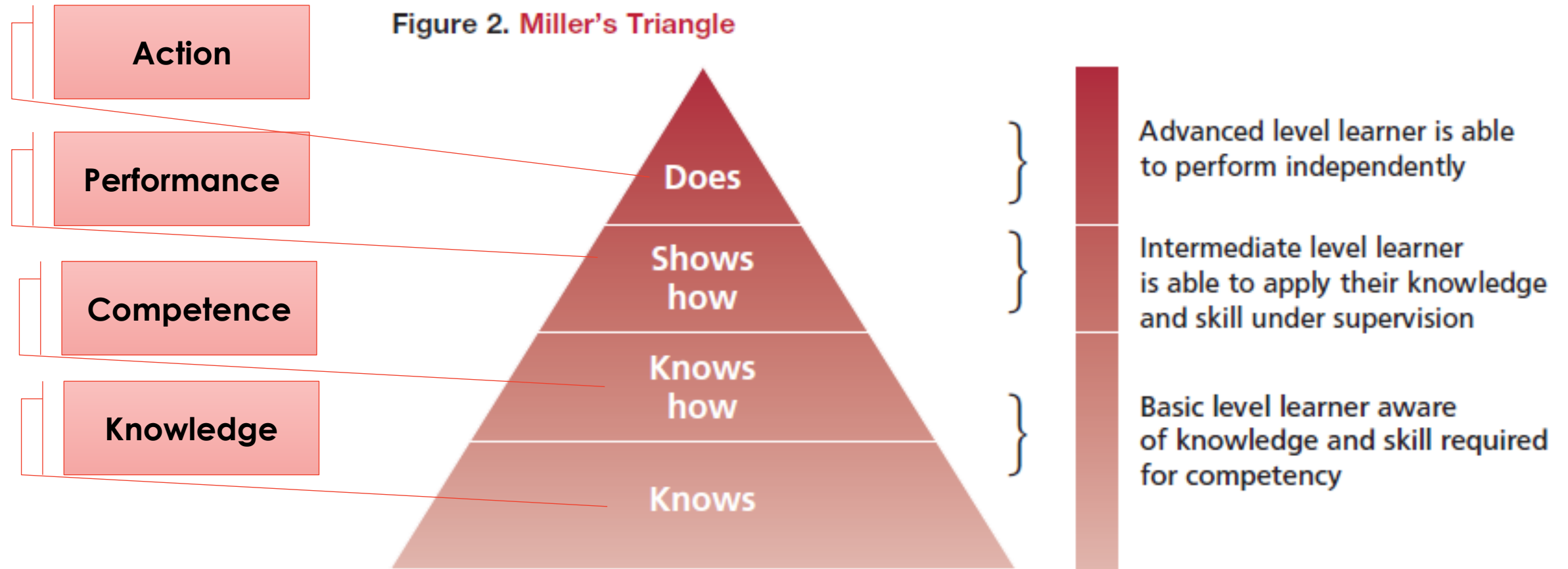


# Structure of the InovSafeCare Model

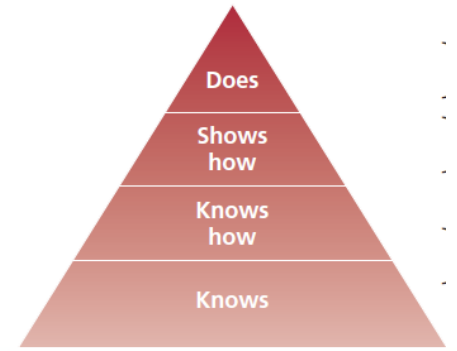


# Structure of the InovSafeCare Model

Figure 2. Miller's Triangle



# Operationalization of the InovSafeCare Model



## Active Learning environment (School and Clinical Settings)

<i>Focus - approach and development of:</i>	
<b>1<sup>st</sup> year</b>	<b>Knowledge + Skills + Attitudes</b> HCAIs Core contents   Fundamental Competencies
<b>2<sup>nd</sup> year</b>	<b>Knowledge + Skills + Attitudes</b> HCAIs Specific Contents   Meta Competencies
<b>3<sup>rd</sup>/4<sup>th</sup> years</b>	<b>Knowledge + Skills + Attitudes</b> <b>InovSafeCare Competencies Profile</b>

# InovSafeCare Model

